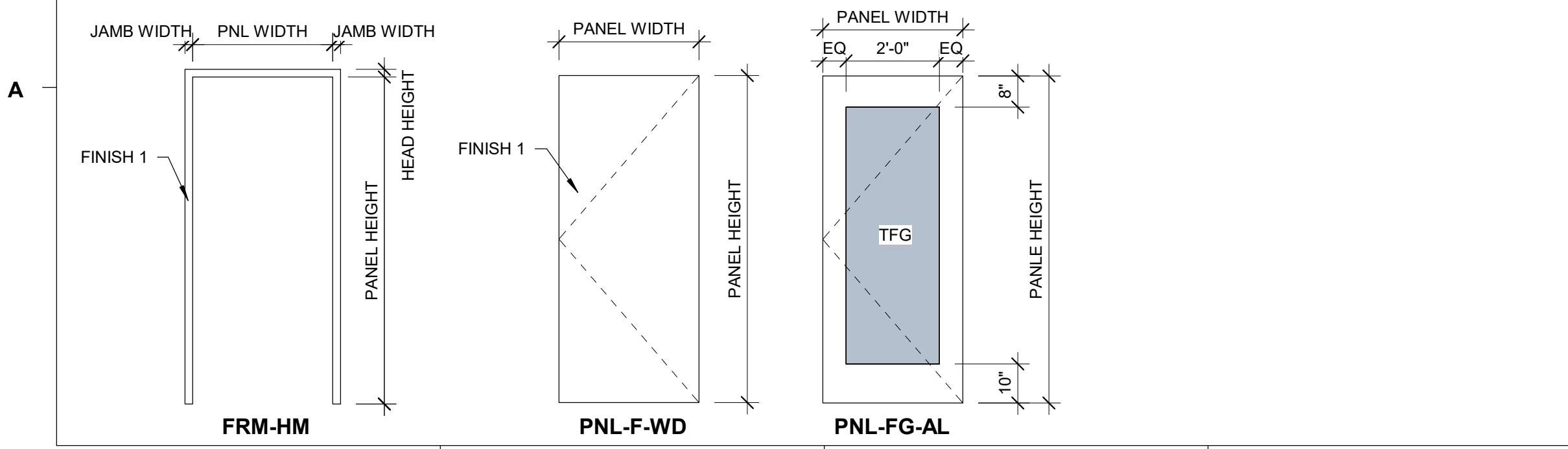


- ### FLOOR PLAN SHEET NOTES
- EXTERIOR DIMENSIONS AT MASONRY VENEER ARE COURSING, NOT ACTUAL AND ARE TO FACE OF MASONRY.
 - EXTERIOR DIMENSIONS AT STUCCO VENEER ARE TO FACE OF METAL STUD.
 - EXTERIOR DIMENSION AT PRECAST ARE TO FACE OF PRECAST.
 - INTERIOR DIMENSIONS INDICATED ARE TO FACE OF STUD, FACE OF MASONRY, CENTERLINES OF COLUMNS, AND FACE OF EXISTING WALL, U.N.O.
 - LOCATE DOOR OPENINGS 4" FROM NEAREST PERPENDICULAR WALL, U.N.O.
 - RATED WALLS/PARTITIONS TO BE CONSTRUCTED TIGHT TO STRUCTURE. ALL PENETRATIONS AND TERMINAL JOINTS ARE TO BE INSTALLED AS SHOWN IN APPLICABLE UL JOINT OR PENETRATION DETAIL.
 - WHERE PARTITIONS OF DIFFERENT FIRE RATINGS INTERSECT, THE HIGHEST RATED PARTITION SHALL CONTINUE THROUGH, MAINTAIN PARTITION FIRE RATING BEHIND RECESSED FIRE EXTINGUISHER CABINETS.
 - RATED WALLS INTERSECTING EXTERIOR WALLS SHALL EXTEND TO THE INSIDE FACE OF EXTERIOR SHEATHING.
 - INSTALL BLOCKING IN PARTITIONS FOR CASEWORK, WALL MOUNTED EQUIPMENT, TRIM, AND RELATED CONSTRUCTION.
 - SEE LIFE SAFETY PLANS FOR LOCATIONS OF FIRE RATED AND SMOKE WALLS.
 - SEE SHEET A-721.1 FOR INTERIOR ELEVATIONS, ACCESSORY DESCRIPTIONS & MOUNTING HEIGHTS.
 - FIELD VERIFY LOCATION OF INTERIOR WALL & CEILING CONTROL JOINTS REQUIRED IN THE SPECIFICATION WITH ARCHITECT PRIOR TO INSTALLATION.
 - WALLS, INCLUDING GYP. BD. AT PERIMETER OF ROOMS/SPACES WITHOUT CEILINGS, i.e. EXPOSED STRUCTURE, SHALL EXTEND TO STRUCTURE ABOVE.
- ### FLOOR PLAN PARTITION SHEET
- ALL PENETRATIONS THRU RATED PARTITIONS, FLOORS, ROOF, ETC. SHALL BE SEALED WITH A UL APPROVED RATED FIRE BARRIER PENETRATION SEALING SYSTEM.
 - CEMENTITIOUS BACKER BOARD SHALL BE USED IN ALL LOCATIONS TO RECEIVE TILE FINISHES. REFER TO FINISH SCHEDULE AND INTERIOR ELEVATIONS FOR LOCATIONS.
 - SEE FINISH SCHEDULE FOR LOCATION OF APPLIED FINISHES (SUCH AS CERAMIC TILE, WALL COVERING, ETC.) THAT MAY AFFECT THE PARTITION SURFACE AND CONSTRUCTION REQUIREMENTS.
 - SHOULD CONDITIONS OCCUR WHERE A PARTITION IS UNABLE TO EXTEND VERTICALLY UP TO STRUCTURE DUE TO PIPING, DUCTWORK, ETC., THE PARTITION (GYPSUM BOARD AND FRAMING) MAY JOE HORIZONTALLY ABOVE THE CEILING TO AVOID THE CONFLICT. RATED WALL INTEGRITY SHALL BE MAINTAINED.
 - DIMENSIONAL CONFLICTS BETWEEN PARTITION TYPES AND THE ARCHITECTURAL FLOOR PLANS SHALL BE BROUGHT TO THE ATTENTION OF THE ARCHITECT.
 - REFER TO UNDERWRITERS LABORATORIES, INC. FIRE RESISTANCE VOLUMES - CURRENT EDITION FOR SPECIFIC CONSTRUCTION REQUIREMENTS OF U.L. LISTED ASSEMBLIES.
 - REFER TO MECHANICAL, ELECTRICAL AND PLUMBING DRAWINGS FOR U.L. LISTED PENETRATIONS THROUGH FIRE-RATED ASSEMBLIES. CONTRACTOR SHALL BE RESPONSIBLE FOR PROVIDING APPROPRIATE PROJECT-SPECIFIC U.L. LISTED ASSEMBLIES FOR PENETRATIONS.
 - RATED WALLS CONTAINING FIRE DAMPERS SHALL BE COORDINATED, FRAMED, AND FINISHED IN ACCORDANCE WITH DAMPER MANUFACTURERS APPROVED UL DETAIL.
 - CONTRACTOR SHALL MAINTAIN INTEGRITY OF EXISTING RATED PARTITIONS.
 - CONTRACTOR AND STEEL STUD SUPPLIER SHALL PROVIDE COMPONENTS, I.E. STUDS, TRACKS, BRACING, ETC. IN THICKNESS/GAUGE REQUIRED FOR ACTUAL HEIGHT TO COMPLY WITH DEFLECTION LIMITS SPECIFIED.
- ### PARTITION TAG KEY
- ADDITIONAL DESIGNATOR: STUD/CMU TYPE PARTITION TYPE PARTITION RATING (IF REQUIRED)
- A3S1**
- ### PARTITION MATERIAL & SIZE
- | | | | |
|-------------------|---------------|---------------|---------------|
| 3 | 4 | 6 | 8 |
| 3 5/8" METAL STUD | 4" METAL STUD | 6" METAL STUD | 8" METAL STUD |
- ### PARTITION TYPES LEGEND
- A - METAL STUD BALANCED WALL
F - METAL STUD FURRED WALL
- ### PARTITION FIRE RATING
- 0 - STRUCTURE AND GYP BOARD 4" ABOVE CEILING
30 - 30 MINUTES RATED FIRE PARTITION
1 - 1HR RATED FIRE BARRIER, UNLESS W/ DESIGNATOR "C, K, P"
2 - 2HR RATED FIRE BARRIER, UNLESS W/ DESIGNATOR "C, W"
3 - 3HR RATED FIRE WALL, UNLESS W/ DESIGNATOR "B"
4 - 4HR RATED FIRE WALL, UNLESS W/ DESIGNATOR "B"
S - NOT RATED, SMOKE PARTITION
T - TILE SUBSTRATE PARTITION
X - NON-RATED TO DECK, SEALED TOP & BOTTOM
Y - STRUCTURE TO DECK, FIN MAT'L TO 4" ABOVE CLG
- ### ADDITIONAL DESIGNATORS
- D - NON-RATED EXTEND TO DECK ABOVE
H - HALF WALL OR PARTIAL HEIGHT WALL
N - NON-INSULATED
S - SOUND ATTENUATION BLANKET IN STUD WALL OR ACOUSTIC FILL IN CMU WALL. PARTITION SHALL EXTEND TO ADJACENT WALLS AND STRUCTURE ABOVE. PROVIDE ACOUSTICAL SEALANT AT BOTTOM, TOP AND SIDES
- ### PARTITION NOTES
- ALL NON-DESIGNATED PARTITIONS SHALL BE **A3**
 - NON-RATED PARTITIONS, EXCEPT THOSE WITH "D" OR "S" DESIGNATOR, GWB SHALL EXTEND 8" ABOVE THE CEILING U.N.O.
 - NON-RATED SMOKE PARTITIONS SHALL EXTEND TO THE STRUCTURE ABOVE.
 - FIRE RATED PARTITIONS SHALL EXTEND TO THE STRUCTURE ABOVE. SEE UL DETAILS FOR ADDITIONAL REQUIREMENTS
 - TYPE "D, E, R, Q" PARTITIONS SHALL EXTEND TO ADJACENT WALLS AND STRUCTURE ABOVE. PROVIDE ACOUSTICAL SEALANT AT BOTTOM, TOP, AND SIDES
 - AT WET AREAS, PROVIDE MOISTURE RESISTANT GWB OR MOLD & MOISTURE RESISTANT GWB AT NON-RATED PARTITIONS. PROVIDE FIRE RATED MOISTURE RESISTANT GWB OR FIRE RATED MOLD & MOISTURE RESISTANT GWB AT RATED PARTITIONS.
 - ON PARTITIONS RECEIVING WALL TILE (REFER TO FINISH SCHEDULE) PROVIDE CEMENTITIOUS BACKER BOARD BEHIND PORTIONS OF PARTITION RECEIVING TILE ONLY.
- ### PARTITION TAG EXAMPLES
- A3 3 5/8" METAL STUD, NON-RATED, GWB 6" ABOVE CLG
A3DX 3 5/8" METAL STUD, NON-RATED, EXTEND TO DECK ABOVE
A3S 3 5/8" METAL STUD, NON-RATED W/SOUND ATTENUATION

DOOR SCHEDULE

NUMBER	DOOR		PANEL FINISH	FRAME		COMMENTS
	PANEL 1	PANEL 2		WIDTH	HEIGHT	
100A	FG-AL		3'-0"	7'-0"	MATCH EXISTING	FG-AL MATCH EXISTING
100B	F-WD		3'-0"	7'-0"	PT-2	HM-1 PT-2
101	F-WD		3'-0"	7'-0"	PT-2	HM-1 PT-2
102	F-WD		3'-0"	7'-0"	PT-2	HM-1 PT-2
103	F-WD		3'-0"	7'-0"	PT-2	HM-1 PT-2
104	FG-AL		3'-0"	7'-0"	MATCH EXISTING	FG-AL MATCH EXISTING



MARK	DESCRIPTION: SEE SPECS FOR FURTHER INFORMATION
IGU-1	INSULATED LAMINATED GLAZING UNIT
TIGU-1	INSULATED LAMINATED GLAZING UNIT, TEMPERED
SIGU-1	INSULATED LAMINATED GLAZING UNIT, SPANDREL
CFG	CLEAR FLOAT GLASS
TFG	TEMPERED FLOAT GLASS
LG	LAMINATED GLAZING

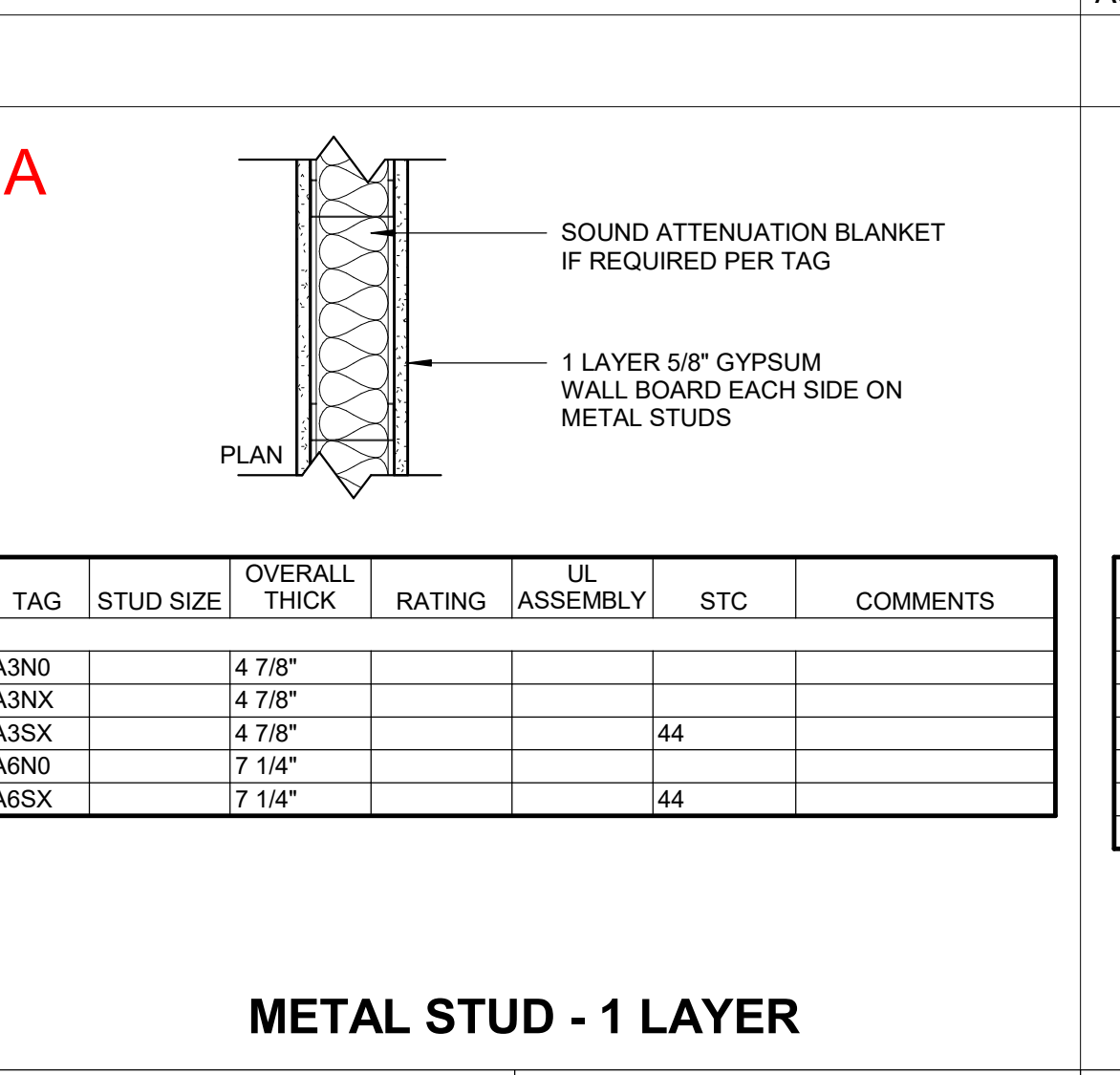
UNLESS OTHERWISE NOTED

- ALL EXTERIOR STOREFRONT & CURTAINWALL GLAZING TO BE TYPE IGU-1 U.N.O.
- ALL INTERIOR STOREFRONT GLAZING TO BE TYPE CFG U.N.O.
- ALL EXTERIOR DOOR GLAZING TO BE TYPE LG U.N.O.
- ALL INTERIOR DOOR GLAZING TO BE TYPE TFG U.N.O. SEE DOOR SCHEDULE FOR INSTANCES.

GLAZING LOCATED BETWEEN 0'-0" AND 30'-0" A.F.F. TO BE LARGE MISSILE IMPACT. GLAZING LOCATED BETWEEN 30'-0" AND 60'-0" A.F.F. TO BE SMALL MISSILE IMPACT. GLAZING LOCATED GREATER THAN 60'-0" A.F.F. DOES NOT REQUIRE IMPACT RATING.

METAL STUD - 1 LAYER

TAG	STUD SIZE	OVERALL THICK	RATING	UL ASSEMBLY	STC	COMMENTS
A3N0	4 7/8"					
A3NX	4 7/8"				44	
A3N0	7 1/4"					
A6SX	7 1/4"				44	



METAL STUD FURRED - 1 LAYER

TAG	STUD SIZE	OVERALL THICK	RATING	UL ASSEMBLY	STC	COMMENTS
F1TX	2 1/4"					
F3N0	4 1/4"					
F3NT	4 1/4"					
F3NX	4 1/4"					
F3TX	4 1/4"					
F6SX	6 5/8"			34		

SAFETY - QUALITY - INTEGRITY

MASC TENANT UPFIT

LS3P

205 1/2 KING STREET
CHARLESTON, SOUTH CAROLINA 29401
TEL. 843.577.4444 FAX 843.722.4789
WWW.LS3P.COM

MEMBERS OF THE AMERICAN INSTITUTE OF ARCHITECTS

COPYRIGHT 2019 ALL RIGHTS RESERVED
PRINTED OR ELECTRONIC DRAWINGS AND DOCUMENTATION MAY NOT BE REPRODUCED IN ANY FORM WITHOUT WRITTEN PERMISSION FROM LS3P ASSOCIATES LTD.

REVISIONS:

No.	Description	Date

PROJECT: 1101-224780
DATE: 04/17/2023
DRAWN BY: ALT
CHECKED BY: LRT

MASC FLOOR PLAN

A-101.1

PERMIT DRAWINGS

BIM 360://101-224780.Landmark Construction/101-224780 Landmark Office.rvt
 4/10/2023 5:06:35 PM