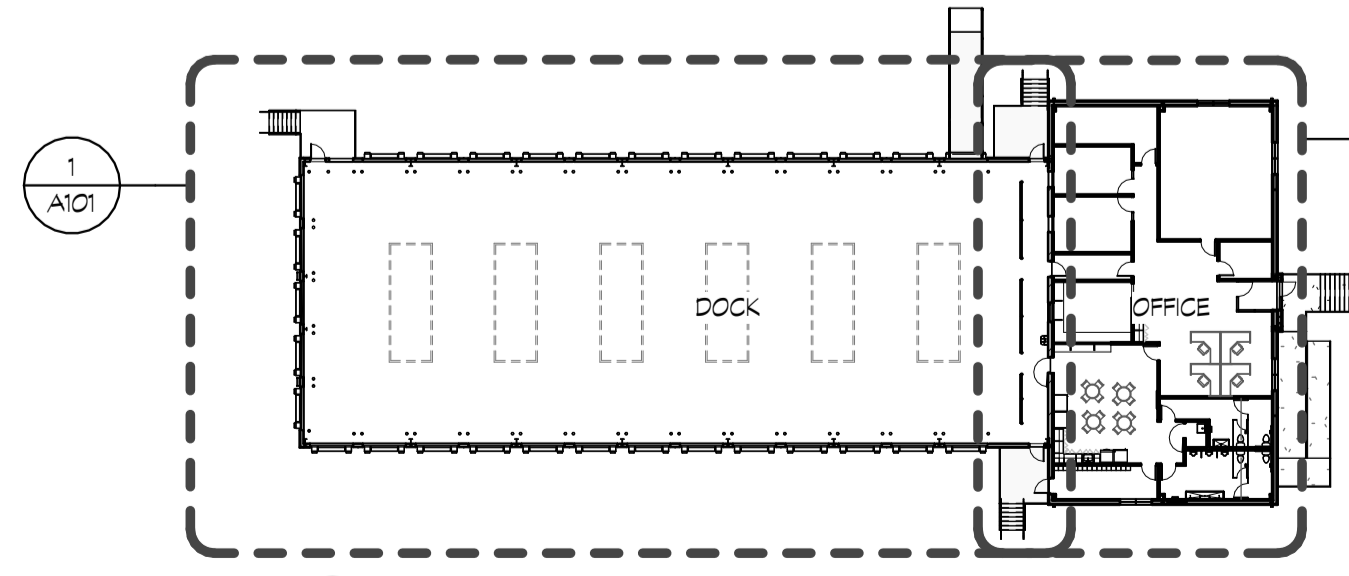
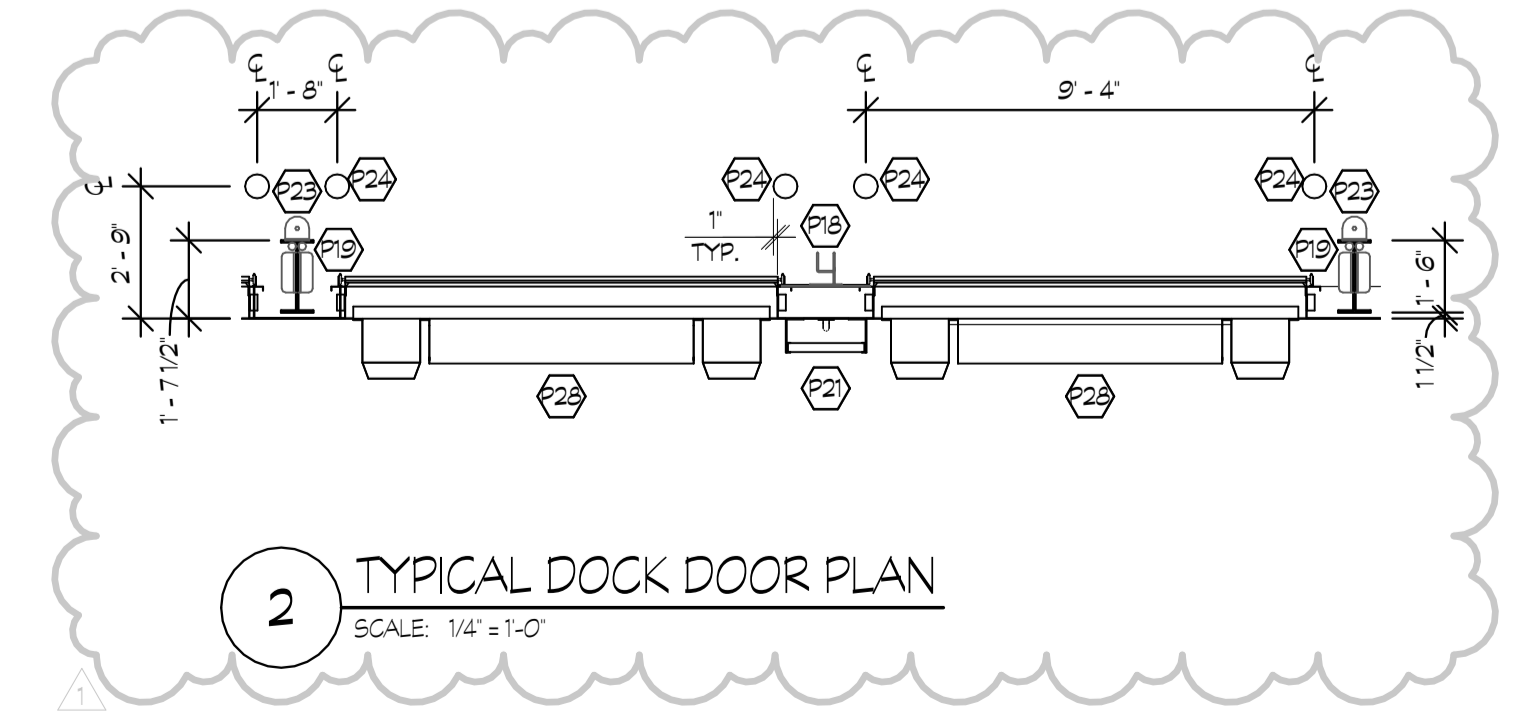


1 DOCK PLAN
SCALE: 1/8" = 1'-0"
BLDG. N
NORTH



4 BUILDING KEY PLAN
SCALE: 1" = 40'-0"



2 TYPICAL DOCK DOOR PLAN
SCALE: 1/4" = 1'-0"

GARAGE DOOR LEGEND

- 1 - 30 9/0 x 10/0 INSULATED SECTION GARAGE DOOR AND TRACK
- 114d 5/0 x 10/0 INSULATED SECTION GARAGE DOOR AND TRACK

FLOOR PLAN KEY NOTES: (P)

- (P1) LINE OF ROOF CANOPY OVERHANG ABOVE.
- (P2) CAST-IN-PLACE CONCRETE ADA RAMP AND LANDINGS WITH LIGHT BROOM FINISH PERPENDICULAR TO RAMP SLOPE AND GALVANIZED STEEL HANDRAILS AND GUARDS, MAX. SLOPE 1/12. PROVIDE HEATING AT RAMP SLAB. REFER TO ELECTRICAL DRAWINGS.
- (P3) VENDING MACHINE (O.P.O.I.).
- (P4) REFRIGERATOR (O.P.O.I.).
- (P5) WALL-MNTD. BRACKET AND TV (O.P.C.I.). CONTRACTOR TO PROVIDE POWER, DATA, AND BLOCKING AS REQUIRED. COORDINATE MOUNTING HEIGHT WITH OWNER.
- (P6) MOP SINK WITH ALL NECESSARY FITTINGS, CONNECTIONS AND ACCESSORIES- SERVICE FAUCET, HOSE AND HOSE BRACKET, BUMPER GUARD AND MOP HANGER. REFER TO PLUMBING DRAWINGS.
- (P7) BLOOD PRESSURE MONITOR/HEALTH SYSTEM KIOSK (O.P.C.I.).
- (P8) DATA RACK (O.P.O.I.) REFER TO ELECTRICAL DRAWINGS.
- (P9) PROVIDE AND INSTALL 3/4" FIRE-RATED PLYWOOD AROUND PERIMETER OF ROOM TO -8'-0" A.F.F. FOR OWNER INSTALLED DATA AND PHONE SYSTEMS. PAINT. REFER TO FINISH SCHEDULE ON A1600.
- (P10) WORK SURFACE PER SECTION 3/A303. COORDINATE LOCATION OF WIRE MANAGEMENT GROMMETS.
- (P11) TRANSACTION COUNTER PER SECTION 3/A303.
- (P12) BREAKROOM COUNTER AND CASEWORK
- (P13) ICE MACHINE
- (P14) WINDOWS TO BE YKK ANODIZED ALUMINUM AND GLASS WINDOW OR APPROVED EQUAL.
- (P15) ADMINISTRATIVE RESOURCE CENTER WALL-MNTD LITERATURE DISPLAY RACK, 20 ADJUSTABLE POCKETS (BLACK) BY DISPLAYS 2 GO OR APPROVED EQUAL. FLOOR-MOUNTED DOCUMENT STORAGE CUBBIES BELOW.
- (P16) ELECTRIC DISTRIBUTION PANELS. SEE ELEC. DWGS.
- (P17) SELF-CONTAINED EMERGENCY EYE WASH STATION. (O.P.O.I.)
- (P18) BROOM/SHOVEL HOOK. COORDINATE LOCATION WITH OTHER ACCESSORIES.
- (P19) BILL BOX TO BE MOUNTED TO FRAME AT GRID LINES.
- (P20) DOCK NUMBER SIGN ABOVE.
- (P21) DOCK LADDER AND GRAB BAR.
- (P22) FLOOR STRIPPING, 4" EPOXY PAINT ETCHED INTO CONCRETE.
- (P23) ACTUATOR BAR SLEEVES MOUNTED INSIDE OF COLUMN FLANGE. EPOXY HOLDER MOUNTED TO FACE OF ACTUATOR BAR SLEEVES @ 60" A.F.F.
- (P24) 6" DIAMETER (SCHEDULE 40) STEEL PIPE BOLLARDS FILLED SOLID WITH CONCRETE. DOME TOP. SHOP PRIME AND APPLY 2 FINISH COATS OF SAFETY YELLOW PAINT. STANDARD DUTY WALL THICKNESS. REFER TO PLAN FOR LOCATIONS. 6" DIAMETER TYPICAL AT TERMINAL INTERIOR.
- (P25) 8" DIAMETER (SCHEDULE 40) STEEL PIPE BOLLARDS FILLED SOLID WITH CONCRETE. DOME TOP. SHOP PRIME AND APPLY 2 FINISH COATS OF SAFETY YELLOW PAINT. STANDARD DUTY WALL THICKNESS. REFER TO PLAN FOR LOCATIONS. 8" DIAMETER TYPICAL AT TERMINAL EXTERIOR.
- (P26) PORTABLE DOCK STAND. (O.P.C.I.) COORDINATE FINAL LOCATION WITH OWNER. PROVIDE OVERHEAD POWER AND DATA AT LOCATIONS. REFER TO ELECTRICAL DRAWINGS.
- (P27) BOLLARD GUARD RAIL.
- (P28) MECHANICALLY OPERATED 30,000 LB CAPACITY DOCK LEVELER WITH BUMPERS AND IT LIP LEVELER BY DLM MANUFACTURING OR APPROVED EQUAL.
- (P29) MOVEABLE DLM 30,000 LBS YARD RAMP WITH SAFETY HANDRAILS BY MANUFACTURER. COORDINATE INSTALLATION WITH MANUFACTURER. CENTER RAMP AT DOOR OPENING.
- (P30) METAL GRATED STAIRS AND WALKWAY.
- (P31) CAST-IN-PLACE CONCRETE STAIR AND LANDING WITH LIGHT BROOM FINISH AND GALVANIZED STEEL HANDRAILS AND GUARDRAILS.
- (P32) SURFACE MOUNTED FIRE EXTINGUISHER - 4A:80B:C MIN. RATING AT TERMINAL DOCK AND SHOP. MOUNT FIRE EXTINGUISHER AT 442" A.F.F. COORDINATE LOCATION WITH OTHER ACCESSORIES. (SEE A002 FOR LOCATIONS)
- (P33) ULINE DOUBLE TIER LOCKERS, MODEL IH-3638. COLOR TO BE GRAY. PROVIDE ADA LOCKER TO COMPLY WITH CODE. PROVIDE FILLER PANEL ON BASE PLATE FRONT AND SIDES.
- (P34) GALVANIZED (5) 33.5 LBS. FORKLIFT PROPANE TANK. CASE. PROVIDE NO SMOKING SIGNS AROUND STORAGE AREA.

FAA REQUIREMENTS:

IF THE PROJECT INVOLVES THE USE OF A CRANE OR ANY OTHER EQUIPMENT THAT HAS THE CAPACITY TO EXTEND HIGHER THAN 30 FEET, THE CONTRACTOR SHALL APPLY FOR A T460 PERMIT: AIRPORT AVIATION PERMIT (FAA) - OCEAAA.FAA.GOV/OEAAA

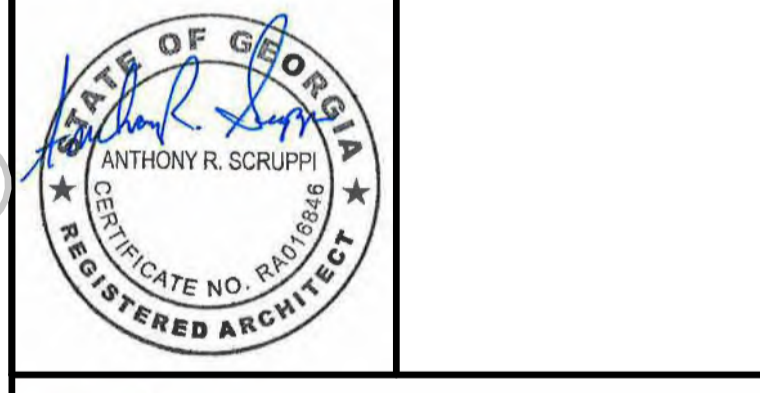
WALL LEGEND

- ALL ROOM DIMENSIONS ARE TO FACE OF G.P.D.W., UNLESS NOTED OTHERWISE
- 1 NEW EXTERIOR WALL: 2 1/2" INSULATED METAL PANEL ON 8" STEEL GIRTS WITH 6" BATT INSULATION, 2 1/2" STUD FRAMING AT 16" O.C. WITH 5/8" GPDW ON OFFICE SIDE. (11-5/8" TOTAL THICKNESS)
 - 2 NEW EXTERIOR WALL: 1 1/2" METAL SIDING ON 8" STEEL GIRTS. (9-1/2" TOTAL THICKNESS)
 - 3 NEW SEPARATION WALL: 7 5/8" CONCRETE MASONRY UNITS UP TO 10'-8" AFF. 1 RIGID INSULATION AND 2 1/2" METAL STUDS AT 16" O.C. WITH 5/8" GPDW ON OFFICE SIDE UP TO 11'-0". 6" METAL STUDS AT 24" O.C. STARTING AT 10'-8" AFF. TO RIDGE BEAM WITH 5/8" ON BOTH SIDES OF STUD. (11-3/4" AND 7-1/4" TOTAL THICKNESS)
 - 4 NEW WALL TO 6" ABOVE CEILING: 3-5/8" METAL STUDS AT 24" O.C. WITH 5/8" GPDW ON BOTH SIDES. (4-7/8" TOTAL THICKNESS)
 - 5 NEW FURRING WALL TO 6" ABOVE CEILING: 3-5/8" METAL STUDS AT 24" O.C. WITH 5/8" GPDW ON THE OFFICE SIDE. (4-1/4" TOTAL THICKNESS)
 - 6 NEW PLUMBING WALL TO 6" ABOVE CEILING: 6" METAL STUDS AT 24" O.C. WITH 5/8" GPDW ON BOTH SIDES. (7-1/4" TOTAL THICKNESS)
 - 7 NEW FURRING WALL TO 6" ABOVE CEILING: 2-1/2" METAL STUDS AT 16" O.C. WITH 5/8" GPDW ON THE OFFICE SIDE. (3-1/8" TOTAL THICKNESS)

GENERAL PLAN NOTES:

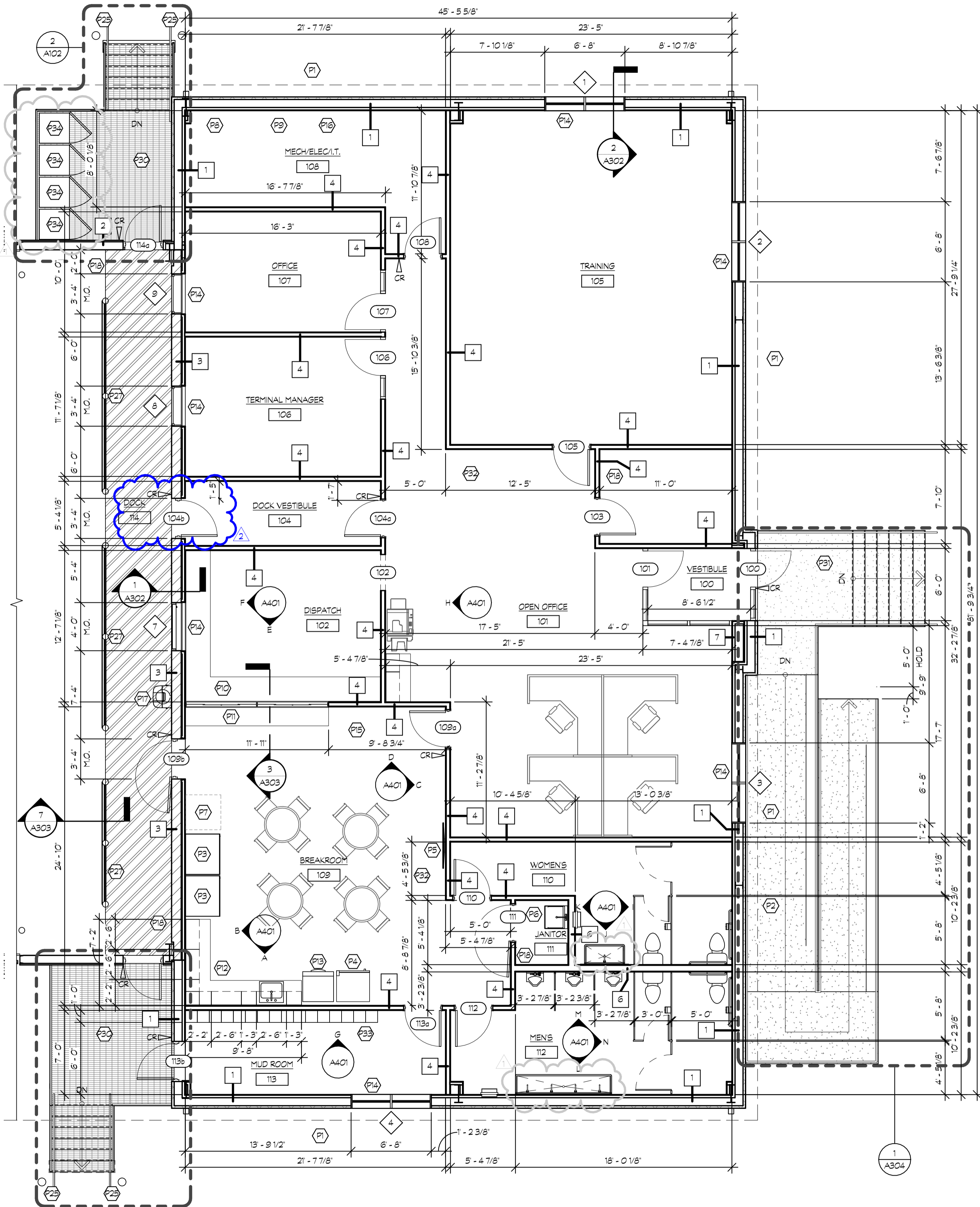
- 1) TOP OF SLAB ON GRADE IS REFERENCE ELEVATION -4'-0".
- 2) 'O.C.' INDICATES OWNER FURNISHED. CONTRACTOR INSTALLED.
- 3) 'O.P.O.I.' INDICATES OWNER FURNISHED. OWNER INSTALLED.
- 4) CONTRACTOR IS TO PERFORM THE WORK OUTLINED IN THESE DOCUMENTS IN ALL AREAS OF CONSTRUCTION UNLESS NOTED OTHERWISE.
- 5) CONTRACTOR SHALL COORDINATE STUD SIZE AND GAUGE NECESSARY FOR HEIGHT OF WALL, AS WELL AS FOR STRUCTURAL, MECHANICAL, PLUMBING, OR ELECTRICAL CLEARANCES PRIOR TO BEGINNING CONSTRUCTION. ANY DISCREPANCIES WITH THE LAYOUT AS DIMENSIONED SHALL BE COORDINATED WITH THE ARCHITECT IMMEDIATELY.
- 6) CONTRACTOR SHALL REINFORCE METAL STUD CONSTRUCTION WITH FIRE-RESISTANT WOOD BLOCKING AT ALL LOCATIONS WHERE WALL, CABINETS, SHELVING, GRAB BARS, ACCESSORIES, ETC. ARE TO BE INSTALLED.
- 7) PROVIDE NO SMOKING SIGNS AT ENTRANCES AND OTHER AREAS WHERE SMOKING IS PROHIBITED PER CITY ORDINANCE. SIGN LOCATIONS TO BE COORDINATED WITH OWNER.
- 8) GENERAL CONTRACTOR TO COORDINATE WITH FIRE MARSHAL FOR LOCATION OF ACCESS BOX CONTAINING KEYS TO THE BUILDING AS REQUIRED.

05/01/2023 REVISION NO. 1
OWNER/CONTRACTOR REVISIONS



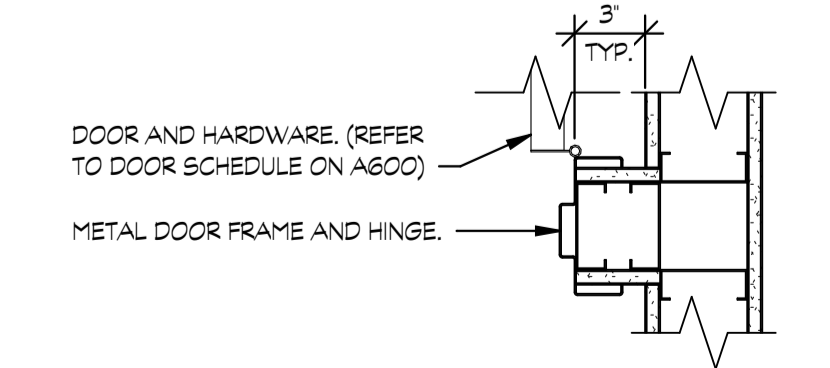
Project: New Construction For: SAIA LTL Freight - Macon
555 Joe Tamplin Industrial Boulevard
Macon, GA 31217

Title: Dock Plan
No. 2022-52
Date: 11/18/22
Revised: 05/01/23

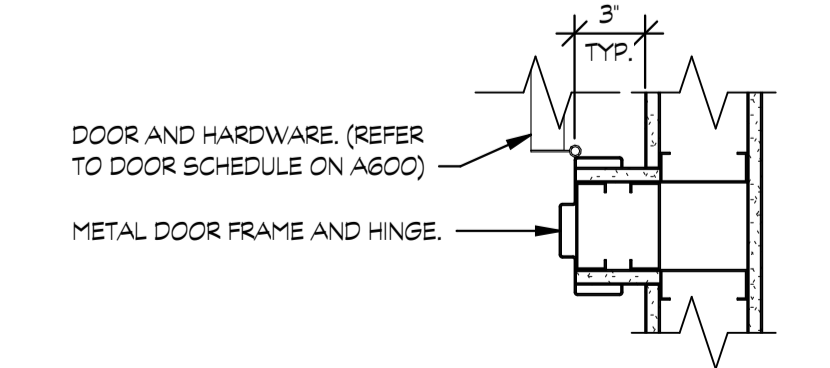


1 ENLARGED FLOOR PLAN
SCALE: 3/16" = 1'-0"

2 METAL STAIR FRAMING/FOUNDATION PLAN
SCALE: 1/4" = 1'-0"



4 TYPICAL DOOR PLACEMENT DETAIL
SCALE: 1/2" = 1'-0"



3 ENLARGED METAL STAIR PLAN
SCALE: 1/4" = 1'-0"



FLOOR PLAN KEY NOTES:

- (P1) LINE OF ROOF CANOPY OVERHANG ABOVE.
- (P2) CAST-IN-PLACE CONCRETE ADA RAMP AND LANDINGS WITH LIGHT BROOM FINISH PERPENDICULAR TO RAMP SLOPE AND GALVANIZED STEEL HANDRAILS AND GUARDS, MAX. SLOPE 1/12. PROVIDE HEATING AT RAMP SLAB. REFER TO ELECTRICAL DRAWINGS.
- (P3) VENDING MACHINE (O.P.O.I.).
- (P4) REFRIGERATOR (O.P.O.I.).
- (P5) WALL-MNTD. BRACKET AND TV (O.P.C.I.). CONTRACTOR TO PROVIDE POWER, DATA, AND BLOCKING AS REQUIRED. COORDINATE MOUNTING HEIGHT WITH OWNER.
- (P6) MOP SINK WITH ALL NECESSARY FITTINGS, CONNECTIONS AND ACCESSORIES- SERVICE FAUCET, HOSE AND HOSE BRACKET, BUMPER GUARD AND MOP HANGER. REFER TO PLUMBING DRAWINGS.
- (P7) BLOOD PRESSURE MONITOR/HEALTH SYSTEM KIOSK (O.P.C.I.).
- (P8) DATA RACK (O.P.O.I.) REFER TO ELECTRICAL DRAWINGS.
- (P9) PROVIDE AND INSTALL 3/4" FIRE-RATED PLYWOOD AROUND PERIMETER OF ROOM TO -8'-0" A.F.F. FOR OWNER INSTALLED DATA AND PHONE SYSTEMS. PAINT. REFER TO FINISH SCHEDULE ON A1600.
- (P10) WORK SURFACE PER SECTION 3/A303. COORDINATE LOCATION OF WIRE MANAGEMENT GROMMETS.
- (P11) TRANSACTION COUNTER PER SECTION 3/A303.
- (P12) BREAKROOM COUNTER AND CASEWORK
- (P13) ICE MACHINE
- (P14) WINDOWS TO BE YKK ANODIZED ALUMINUM AND GLASS WINDOW OR APPROVED EQUAL.
- (P15) ADMINISTRATIVE RESOURCE CENTER, WALL-MNTD LITERATURE DISPLAY RACK, 20 ADJUSTABLE POCKETS (BLACK) BY DISPLAYS 2 GO OR APPROVED EQUAL. FLOOR-MOUNTED DOCUMENT STORAGE CUBBIES BELOW.
- (P16) ELECTRIC DISTRIBUTION PANELS. SEE ELEC. DWGS.
- (P17) SELF-CONTAINED EMERGENCY EYE WASH STATION. (O.P.O.I.)
- (P18) BROOM/SHOVEL HOOK. COORDINATE LOCATION WITH OTHER ACCESSORIES.
- (P19) BILL BOX TO BE MOUNTED TO FRAME AT GRID LINES.
- (P20) DOCK NUMBER SIGN ABOVE.
- (P21) DOCK LADDER AND GRAB BAR.
- (P22) FLOOR STRIPPING, 4" EPOXY PAINT ETCHED INTO CONCRETE.
- (P23) ACTUATOR BAR SLEEVES MOUNTED INSIDE OF COLUMN FLANGE. SPOOL HOLDER MOUNTED TO FACE OF ACTUATOR BAR SLEEVES @ 60" A.F.F.
- (P24) 6" DIAMETER (SCHEDULE 40) STEEL PIPE BOLLARDS FILLED SOLID WITH CONCRETE. DOME TOP. SHOP PRIME AND APPLY 2 FINISH COATS OF SAFETY YELLOW PAINT. STANDARD DUTY WALL THICKNESS. REFER TO PLAN FOR LOCATIONS. 6" DIAMETER TYPICAL AT TERMINAL INTERIOR.
- (P25) 6" DIAMETER (SCHEDULE 40) STEEL PIPE BOLLARDS FILLED SOLID WITH CONCRETE. DOME TOP. SHOP PRIME AND APPLY 2 FINISH COATS OF SAFETY YELLOW PAINT. STANDARD DUTY WALL THICKNESS. REFER TO PLAN FOR LOCATIONS. 6" DIAMETER TYPICAL AT TERMINAL EXTERIOR.
- (P26) PORTABLE DOCK STAND. (O.P.C.I.) COORDINATE FINAL LOCATION WITH OWNER. PROVIDE OVERHEAD POWER AND DATA AT LOCATIONS. REFER TO ELECTRICAL DRAWINGS.
- (P27) BOLLARD GUARD RAIL.
- (P28) MECHANICALLY OPERATED 30,000 LB CAPACITY DOCK LEVELER WITH BUMPERS AND IT LIP LEVELER BY PLM MANUFACTURING OR APPROVED EQUAL.
- (P29) MOVEABLE DLM 30,000 LBS YARD RAMP WITH SAFETY HANDRAILS BY MANUFACTURER. COORDINATE INSTALLATION WITH MANUFACTURER. CENTER RAMP AT DOOR OPENING.
- (P30) METAL GRATED STAIRS AND WALKWAY.
- (P31) CAST-IN-PLACE CONCRETE STAIR AND LANDING WITH LIGHT BROOM FINISH AND GALVANIZED STEEL HANDRAILS AND GUARDRAILS.
- (P32) SURFACE MOUNTED FIRE EXTINGUISHER - 4A:60B:C MIN. RATING AT TERMINAL DOCK AND SHOP. MOUNT FIRE EXTINGUISHER AT 42" A.F.F. COORDINATE LOCATION WITH OTHER ACCESSORIES. (SEE A002 FOR LOCATIONS)
- (P33) ULINE DOUBLE TIER LOCKERS, MODEL IH-3638. COLOR TO BE GRAY. PROVIDE ADA LOCKER TO COMPLY WITH CODE. PROVIDE FILLER PANEL ON BASE PLATE FRONT AND SIDES.
- (P34) GALVANIZED (6) 33.5 LBS. FORKLIFT PROPANE TANK CASE. PROVIDE NO SMOKING SIGNS AROUND STORAGE AREA.

05/19/2023 REVISION NO. 1
05/01/2023 REVISION NO. 1
HARDWARE REVISION
OWNER/CONTRACTOR REVISIONS



Project: New Construction For: SAIA LTL Freight - Macon
555 Joe Tamplin Industrial Boulevard
Macon, GA 31217

Title: Enlarged Floor Plan

No. 2022-52
Date: 11/18/22
Revised: 05/01/23