

GENERAL PLAN NOTES

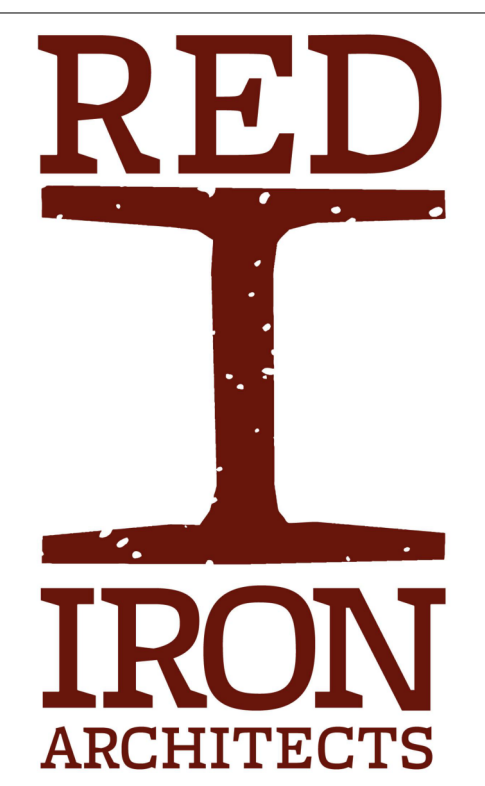
- EXISTING CONDITIONS, PRESENCE, AND LOCATIONS OF ALL EQUIPMENT, CASEWORK, AND MATERIALS INDICATED ARE BASED ON INFORMATION OBTAINED FROM RECORD DRAWINGS AND FIELD SURVEYS. THEY ARE NOT WARRANTED TO BE COMPLETE OR CORRECT AS CONTRACTOR SHALL FIELD VERIFY ALL AREAS AFFECTED BY NEW WORK.
- ALL WORK TO COMPLY WITH CURRENT CODES. REVIEW G0.02 FOR PARTIAL CODE ANALYSIS AND LIFE SAFETY PLAN.
- ALL GENERAL CONTRACTORS, SUB CONTRACTORS AND VENDORS ARE TO REVIEW ARCHITECT'S DRAWINGS AND SPECIFICATIONS, AS WELL AS ENGINEERS DRAWINGS AND SPECIFICATIONS, AND COORDINATE EACH WITH THEIR SPECIFIC FIELD. DRAWING PACKAGE IS TO BE TREATED AS A WHOLE, NOT SEPARATED INTO PARTS.
- GENERAL CONTRACTOR SHALL VERIFY EXISTENCE OF ALL UNDERGROUND UTILITIES AND PIPING, AND PROTECT BEFORE BEGINNING WORK. GENERAL CONTRACTOR SHALL EMPLOY A LOCATION SERVICE AT HIS EXPENSE AND WILL BE RESPONSIBLE FOR ANY REPAIR NECESSARY AS A RESULT OF DAMAGES CAUSED BY CONSTRUCTION OPERATIONS.
- GENERAL CONTRACTOR SHALL VERIFY THE REQUIREMENTS FOR INSTALLATION OF ALL EQUIPMENT AND FURNISHINGS. ALL ANTICIPATED BLOCKING SHALL BE INCLUDED IN THE PROJECT.
- SECTIONS AND DETAILS ARE SHOWN TO DESCRIBE DESIGN INTENT. COORDINATE ALL INSTALLATION WITH MANUFACTURERS' RECOMMENDATIONS AND WITHOUT VOIDING ANY WARRANTIES AND GOVERNING CODES.

GENERAL KEYNOTES

- 1 SEE MECHANICAL

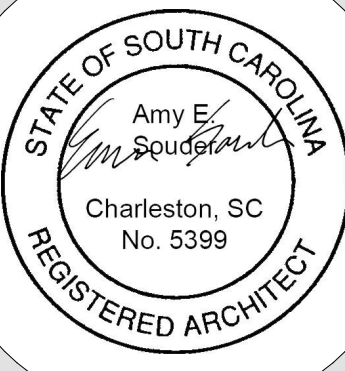
DIMENSION NOTES

- CONTRACTOR TO FIELD VERIFY ALL DIMENSIONS AND CONDITIONS. NOTIFY ARCHITECT OF ANY POSSIBLE CONFLICTS PRIOR TO INITIATING ANY WORK.
- DIMENSIONS ARE FROM FINISH-FACE-OF-WALL TO SAME SIDE OF FINISH-FACE-OF-WALL AT INTERIOR WALLS, AND FACE-OF-WALL TO INTERIOR FACE-OF-WALL AT EXTERIOR WALLS.
- CLEAR DIMENSIONS ARE FROM FINISH-FACE TO FINISH-FACE OF WALL IMMEDIATELY ADJACENT AS SHOWN.
- REFER TO ENLARGED PLANS FOR ADDITIONAL DIMENSIONS NOT INDICATED ON OVERALL PLANS.
- NOTIFY ARCHITECT OF MAJOR DISCREPANCIES IMMEDIATELY.
- ANY DIMENSION WITH "VERIFY" LISTED IS INTENDED TO GIVE FLEXIBILITY IN THE DESIGN SO WALLS MAY ALIGN WITH EACH OTHER, COLUMNS, OR OTHER BUILDING ELEMENTS, AND THE ACTUAL SIZE OF THE ROOM MAY BE REDUCED OR INCREASED BY INCHES TO ACCOMMODATE THE DESIGN INTENT.



4591 Durant Avenue
North Charleston, SC 29405

843.834.2677
www.red-ironarchitects.com



TRIDENT
HEALTH

TMC WOUND CARE
RELOCATION
2845 TRICOM STREET
N. CHARLESTON, SC 29406

#	DESCRIPTION	DATE
1	ADDENDUM 2	2/24/23
2	ADDENDUM 3	3/6/23

ALL DESIGNS, DRAWINGS, AND SPECIFICATIONS DEPICTED ON THIS SHEET ARE PROPERTY OF RED IRON ARCHITECTS, LLC. ANY UNAUTHORIZED USE IS SUBJECT TO LEGAL PROSECUTION. POSSESSION IN ANY FORM CONSTITUTES ACCEPTANCE OF THESE CONDITIONS.

RED IRON ARCHITECTS, LLC. COPYRIGHT © 2023

☐ APPROVED FOR CONSTRUCTION

CONSTRUCTION
DOCUMENTS

DIMENSION &
REFERENCE PLAN

Project Number: 22078
Date: 02/16/23
Drawn By: EMW

A1.01

1 FLOOR PLAN - DIMENSION & REFERENCE
A1.01 1/4" = 1'-0"